

Research Software Engineers

A community update

Presenter: Nooriyah P Lohani
nooriyah.lohani@nesi.org.nz

Co-Authors: Manodeep Sinha
Nick May

Who are RSE's ?

“A growing number of people in academia combine expertise in programming with an intricate understanding of research. Although this combination of skills is extremely valuable, these people lack a formal place in the academic system. This means there is no easy way to recognise their contribution, to reward them, or to represent their views.”

<https://rse.ac.uk>

Achievements this year

- RSE-AUNZ has an enthusiastic core community – steering committee
- Workshop and BoF session at eResearch Australasia 2018 conference.
- BoF session at eResearch NZ 2019 conference.
- Participation in the international RSE Survey

Background

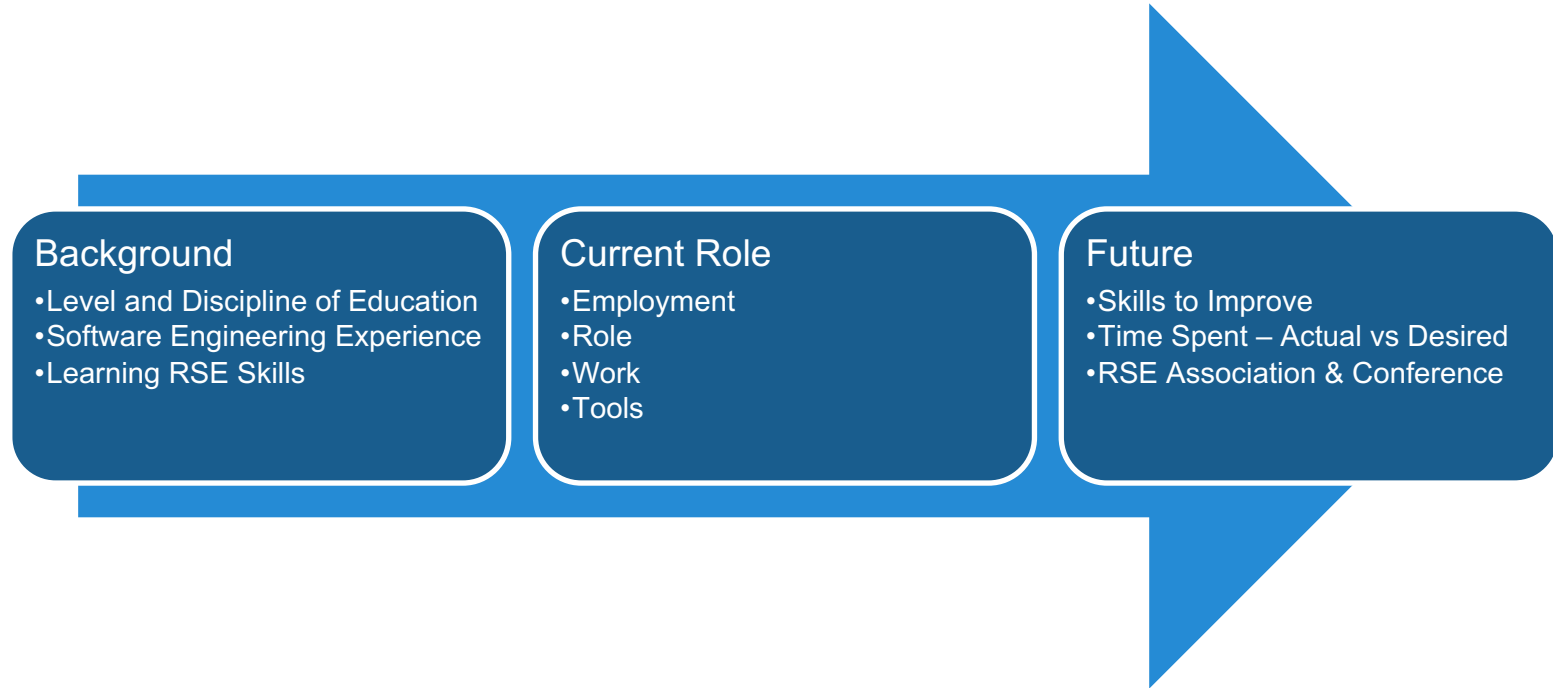
In 2018, the **RSE-AUNZ** association participated in an international survey ^[1] organized by the Software Sustainability Institute in the UK, with questions tailored for AU and NZ contexts ^[2].

“The purpose of this survey is to collect information about people who develop the software that is used in research.”

“We call these people Research Software Engineers (RSEs)^[2], but they exist under many job titles (from postdoctoral researcher to applications consultant, to bioinformatician).”

1. Phillippe et. al. (2019), ‘softwaresaved/international-survey: Public release for 2018 results’, <http://doi.org/10.5281/zenodo.2585783>
2. by Nooriyah Poonawala Lohani (NeSI), Manodeep Sinha (Swinburne University of Technology), and Nicholas May (RMIT University).
3. <https://www.software.ac.uk/blog/2016-11-17-not-so-brief-history-research-software-engineers>

Results Overview

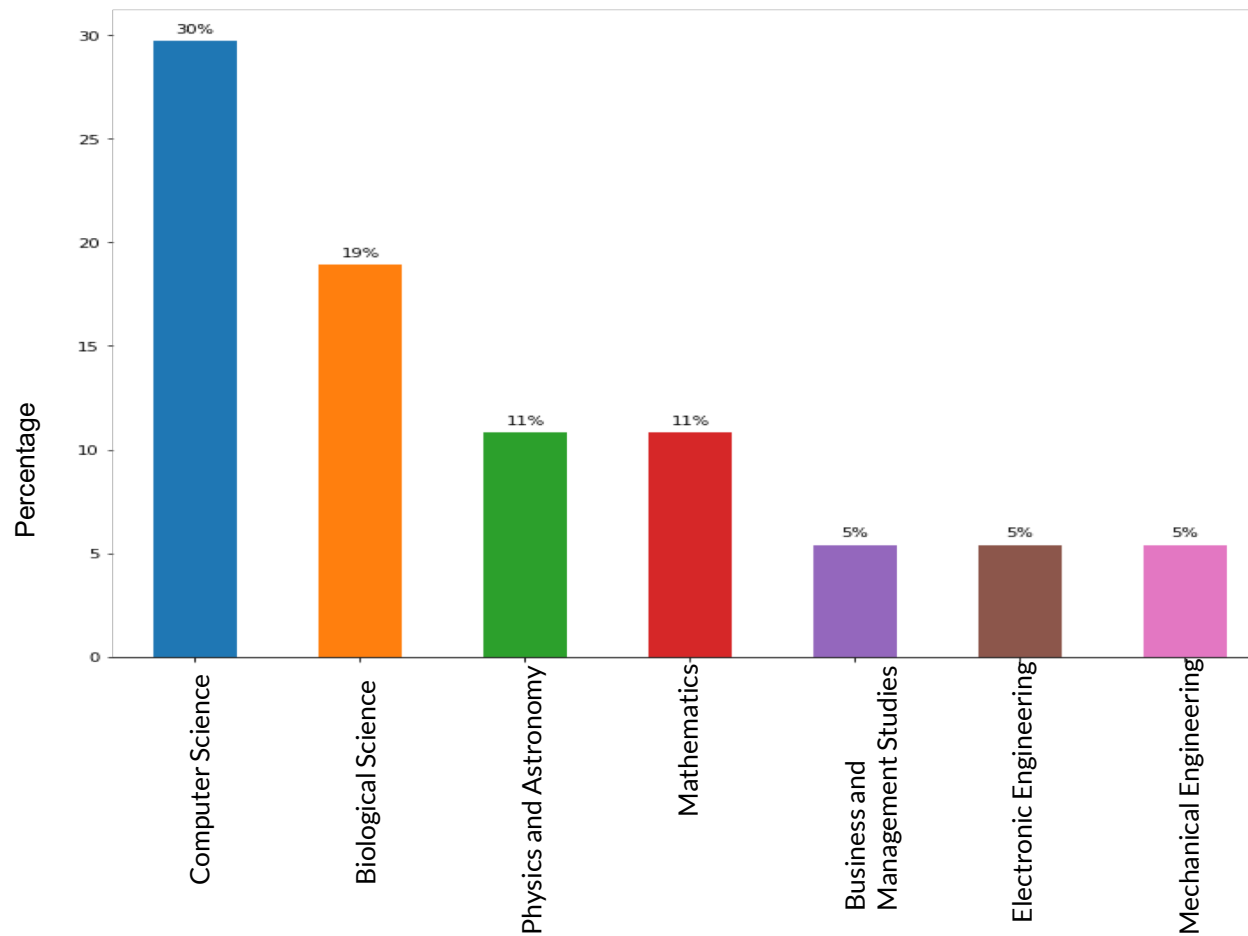


37 of the survey participants were from New Zealand

Education and Demographic

- PhD's - 38%
- Master's - 27%
- Undergraduate - 27%
- Majority in the 25-54 year age group
- 91% Males

Academic Field :



What do people spend their time doing?

- 2 measure - **time spent** and **time wish to spend**
- Calculate the difference between time spent and wish to spend
- The activities measured are:
 - Develop software
 - Research
 - Management
 - Teaching
- Majority RSE wish to
 - spend **more** time on Developing software and Research
 - spend **less** time on management and teaching

Career path and motivation

- Majority worked at a University
- **Motivations** to be an RSE:
 - Desire to work in a research environment
 - Freedom to choose their own working environment
 - Desire to advance research
 - Last : Salary and career advancement

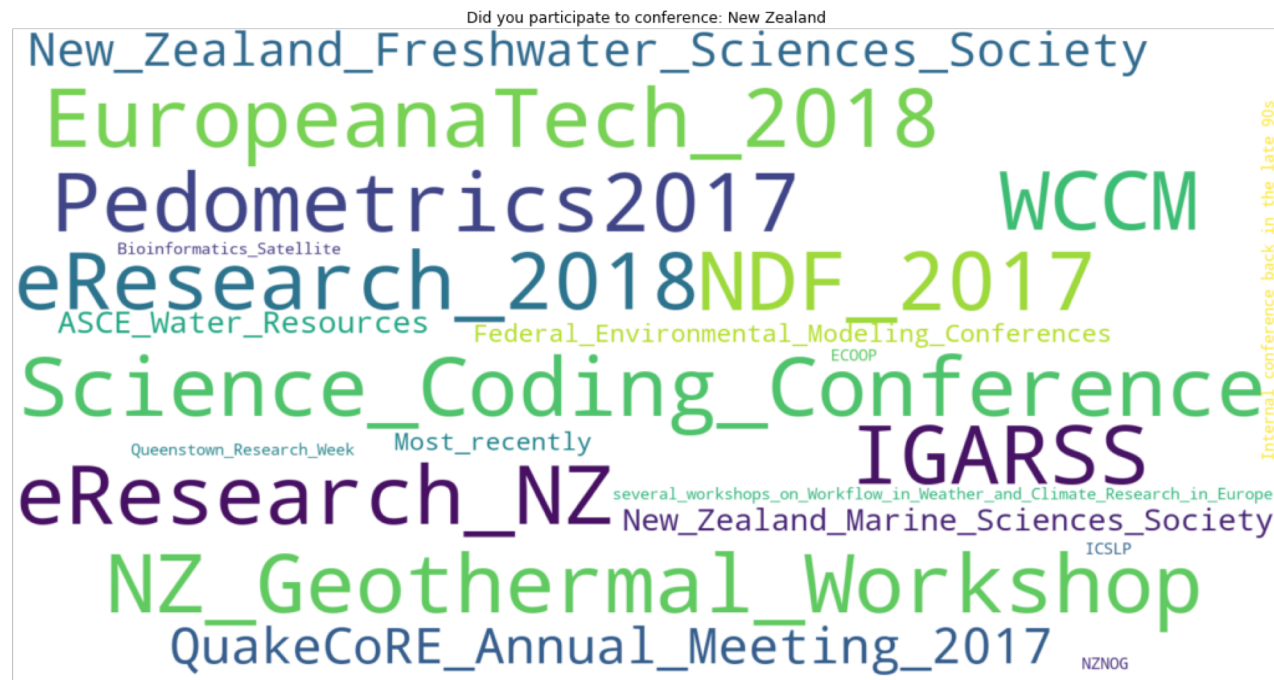
Training

- Majority are currently involved in 1-5 projects
- Majority responses reflect 1-2 developers per project
- Many involved in training such as:
 - the carpentries
 - local institution training
 - code optimisation
 - local HPC on-boarding, etc.

Publications and citations

44% (NZ) Named as co-author

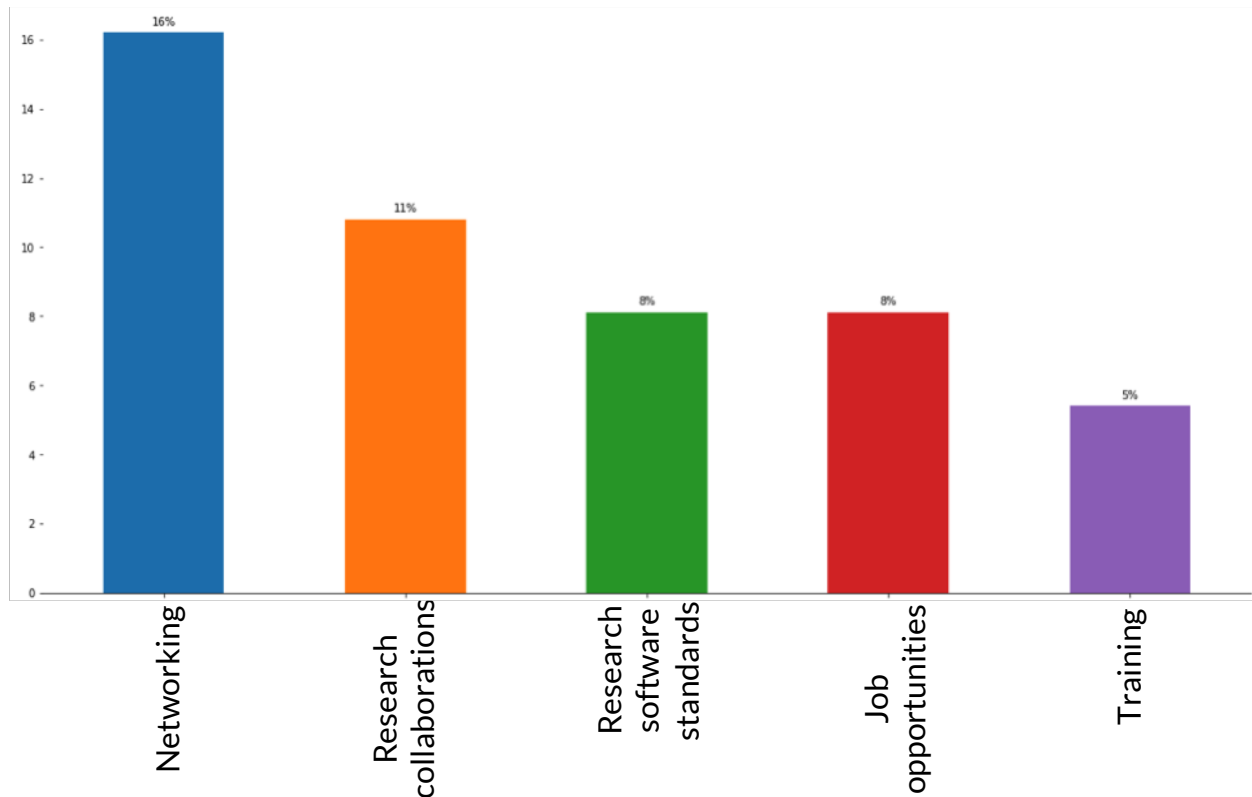
- 56% present at a conference/workshop



Job satisfaction and recognition

- Majority are **satisfied** with their current role
- **85 - 90%** DO feel recognised by their **managers and colleagues**
- **48%** do NOT feel recognised by their **institution**
- **66%** would NOT accept **another job** at the same compensation level
- **60 - 70%** do NOT see **career progression opportunities**

What should be the focus of an RSE organisation in New Zealand?



Where can I
find this
information?

<https://github.com/rse-aunz/international-survey>

The screenshot displays the GitHub interface for the repository `rse-aunz / international-survey`, which is a fork of `softwaresaved/international-survey`. The repository has 4 watchers, 0 stars, and 0 forks. Navigation tabs include Code, Pull requests (0), Projects (0), Wiki, Insights, and Settings. A description states: "International collaboration on RSE survey. Contact: @Oliph". Below this, statistics show 1,824 commits, 8 branches, 1 release, and 15 contributors. A bar at the top indicates the current branch is `2018-survey`, with options to create a new pull request, upload files, or clone/download. A message notes the branch is 11 commits ahead and 10 commits behind the upstream. A table lists the repository's contents:

File/Folder	Description	Last Update
<code>analysis</code>	Latest updates from upstream (#5)	24 days
<code>survey_creation</code>	Updated the welcome text to the upstream version	28 days
<code>.gitignore</code>	Merge: .gitignore from analysis to root folder	2 months
<code>.zenodo.json</code>	Added affiliation	5 months
<code>HOW TO CONTRIBUTE.md</code>	Update - change the title of some columns in questions.csv	8 months
<code>LICENSE</code>	Create LICENSE	5 months
<code>LICENSE_FOR_DATA</code>	Updating author names	5 months

Planning for the next year

- Publish a Manifesto or Mission Statement.
- Define Personas, Profiles, or Personal Stories of the people that form the RSE community.
- Establish a permanent Web Presence to be launched at eResearch Australasia 2019.
- For NZ specifically:
 - A slack channel - within the RSE channel
 - A virtual tech talk

Acknowledgements

- Georgina Rae, NeSI
- Manodeep Sinha, University of Swinburne
- Nick May, RMIT
- Rowland Mosbergen, ARDC
- Mingfang Wu, ARDC
- Olivier Philippe, Software sustainability Institute UK
- Simon Hettrick, Software sustainability Institute UK



Thank you

Questions?

Phillippe et. al. (2019),
'softwaresaved/international-survey: Public release for
2018 results',
<http://doi.org/10.5281/zenodo.2585783>



<https://rse-aunz.github.io/>
rse-nz-au@googlegroups.com
[@rse_aunz](#)