



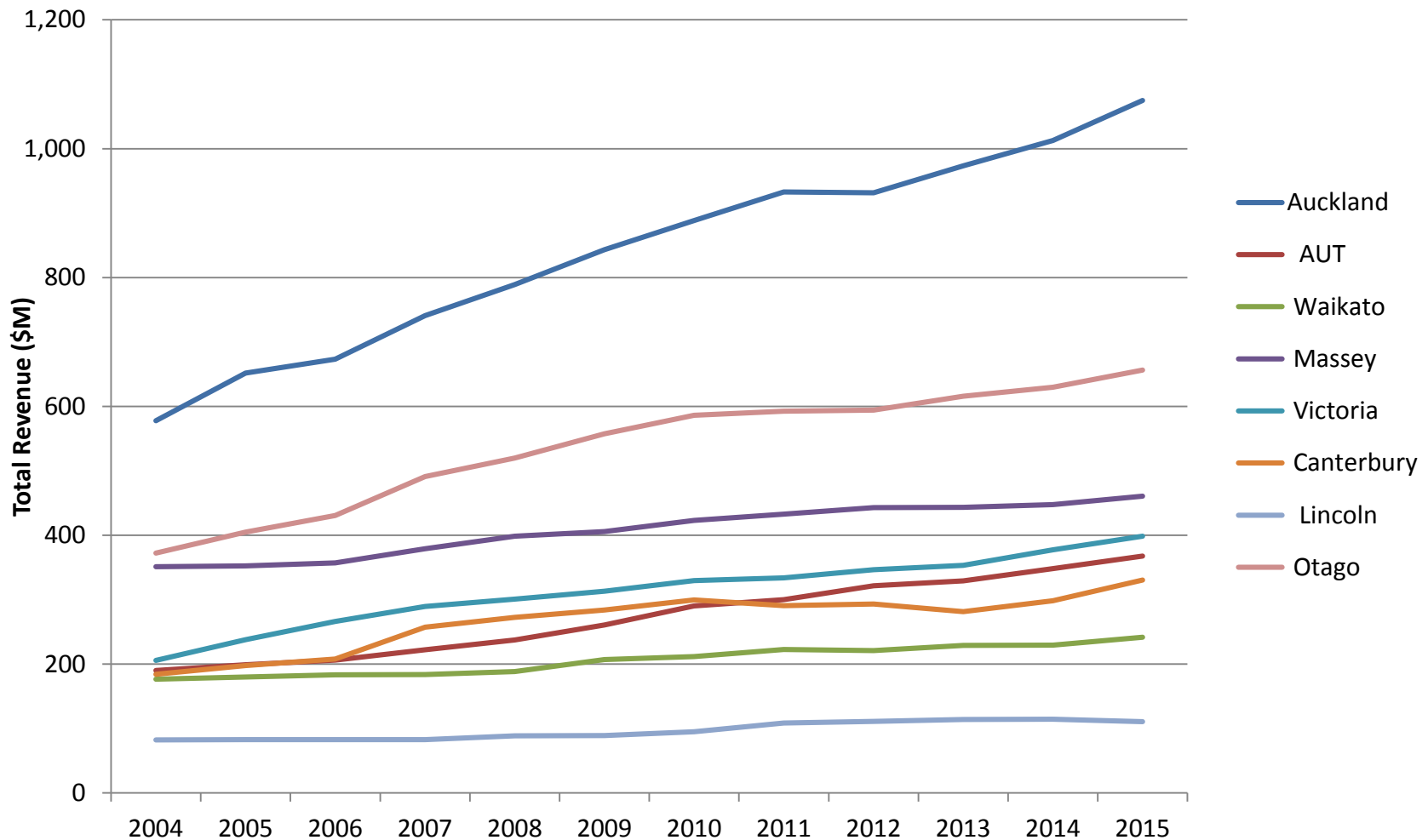
THE UNIVERSITY OF  
**AUCKLAND**  
Te Whare Wānanga o Tāmaki Makaurau  
NEW ZEALAND

# University Sector Performance

Office of the Vice-Chancellor

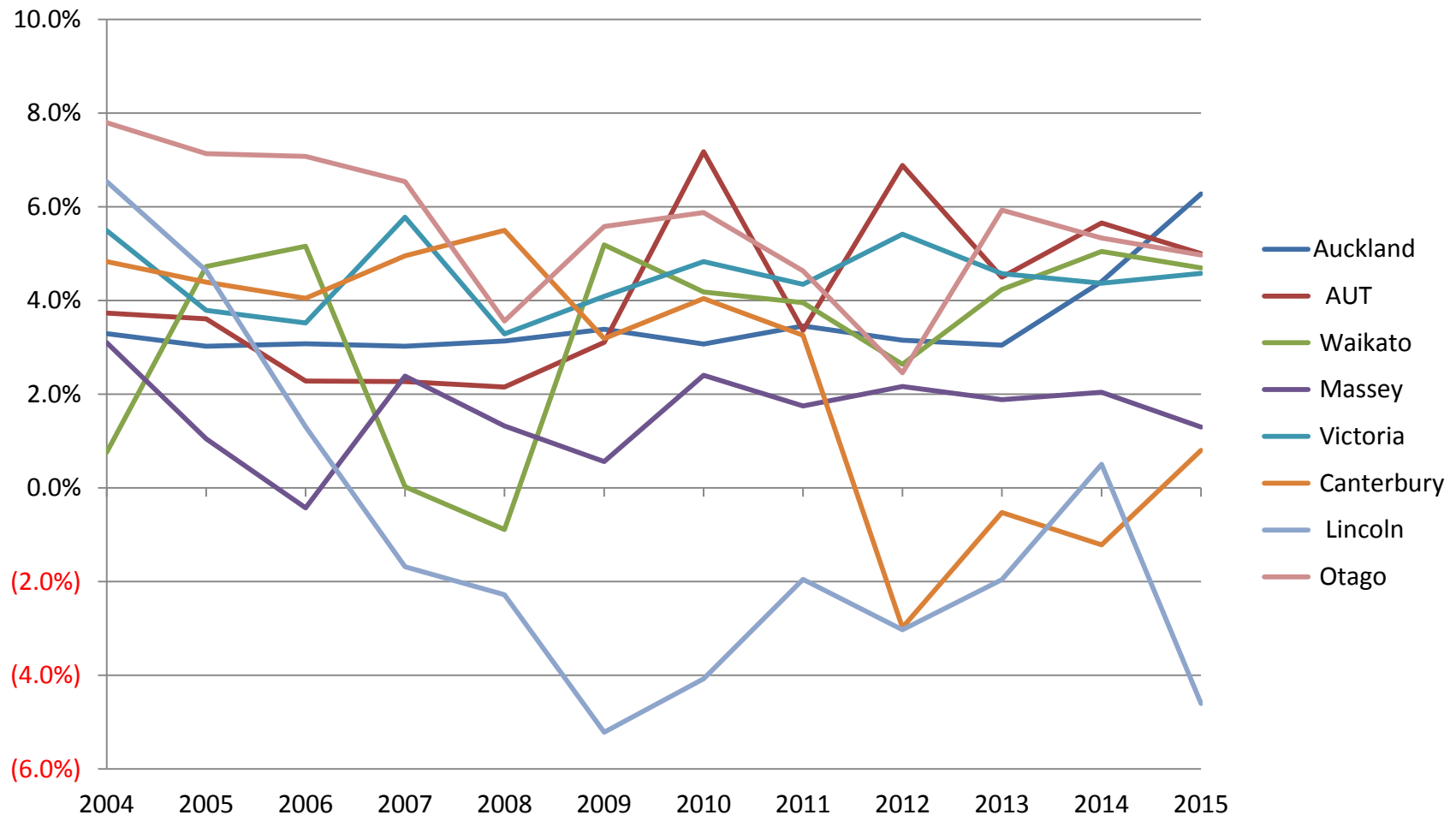
Monday, 1 May 2017

# Total Revenue



Source: Tertiary Education Commission, 1997-2014 TEI sector performance data; 2015 data from TEI financial information by year.

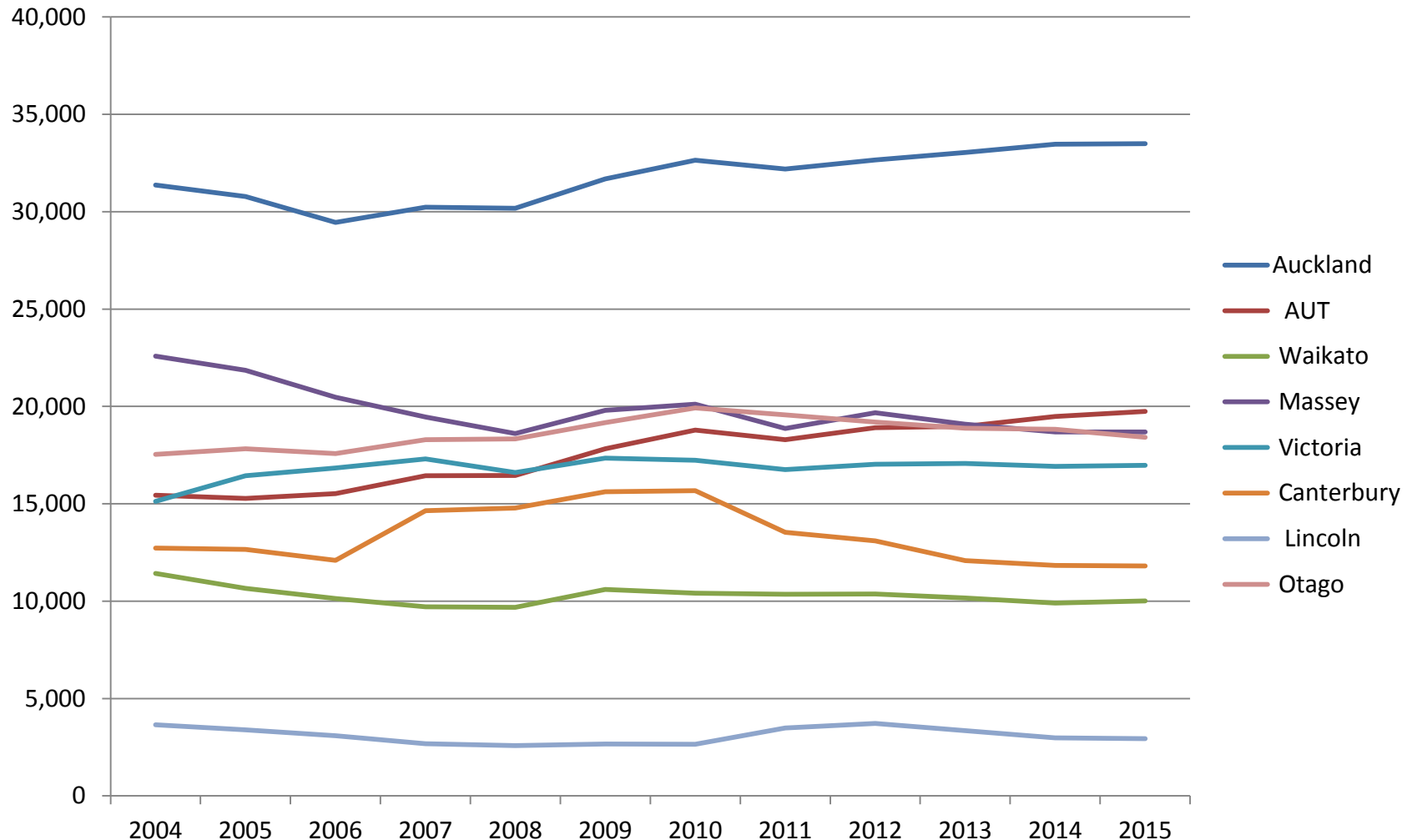
# Operating Surplus/Deficit (%)



Note: Operating surplus/deficit before unusals to total income (%)

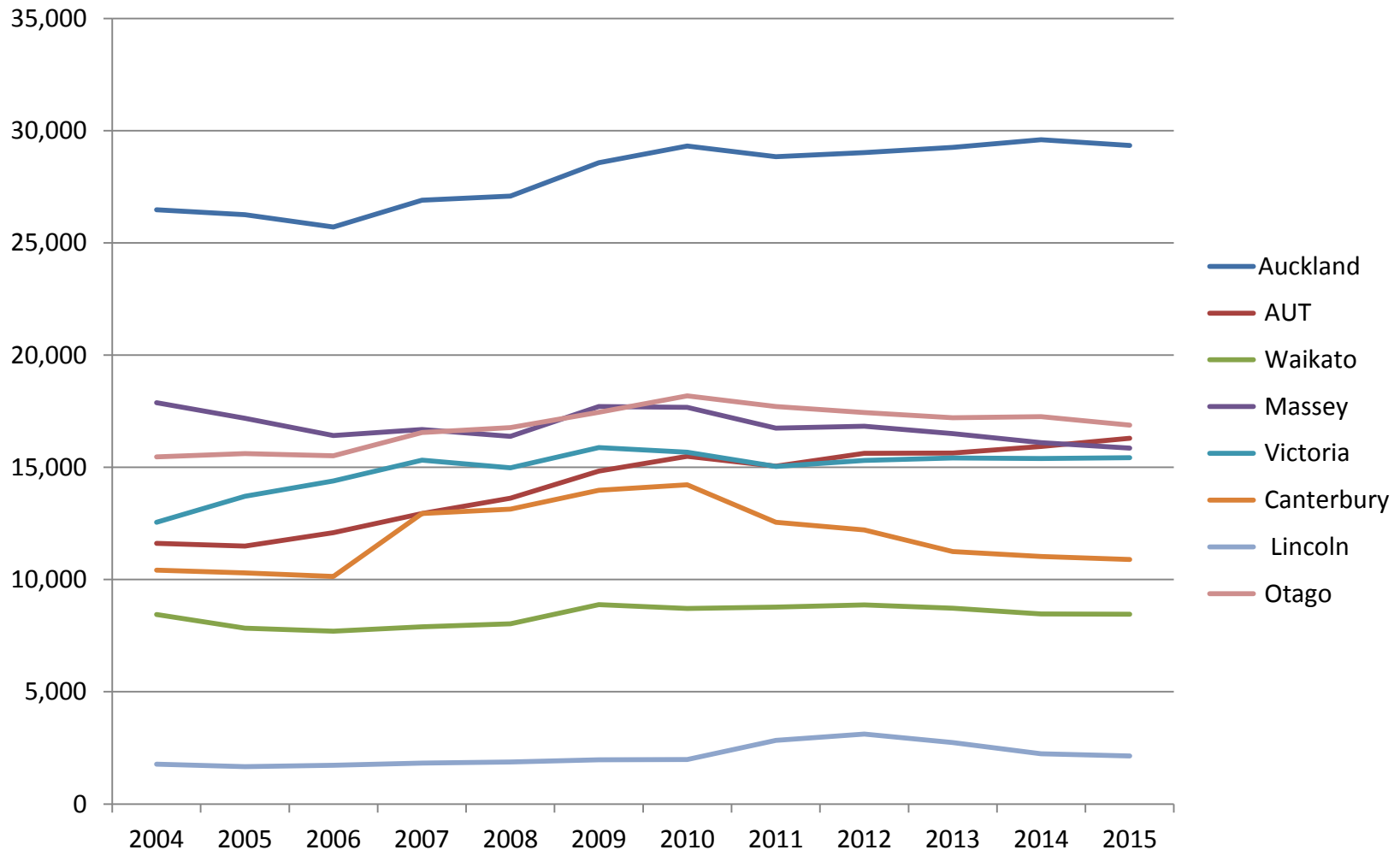
Source: Tertiary Education Commission, 1997-2014 TEI sector performance data; 2015 data from TEI financial information by year.

# Total Student Numbers (EFTS)



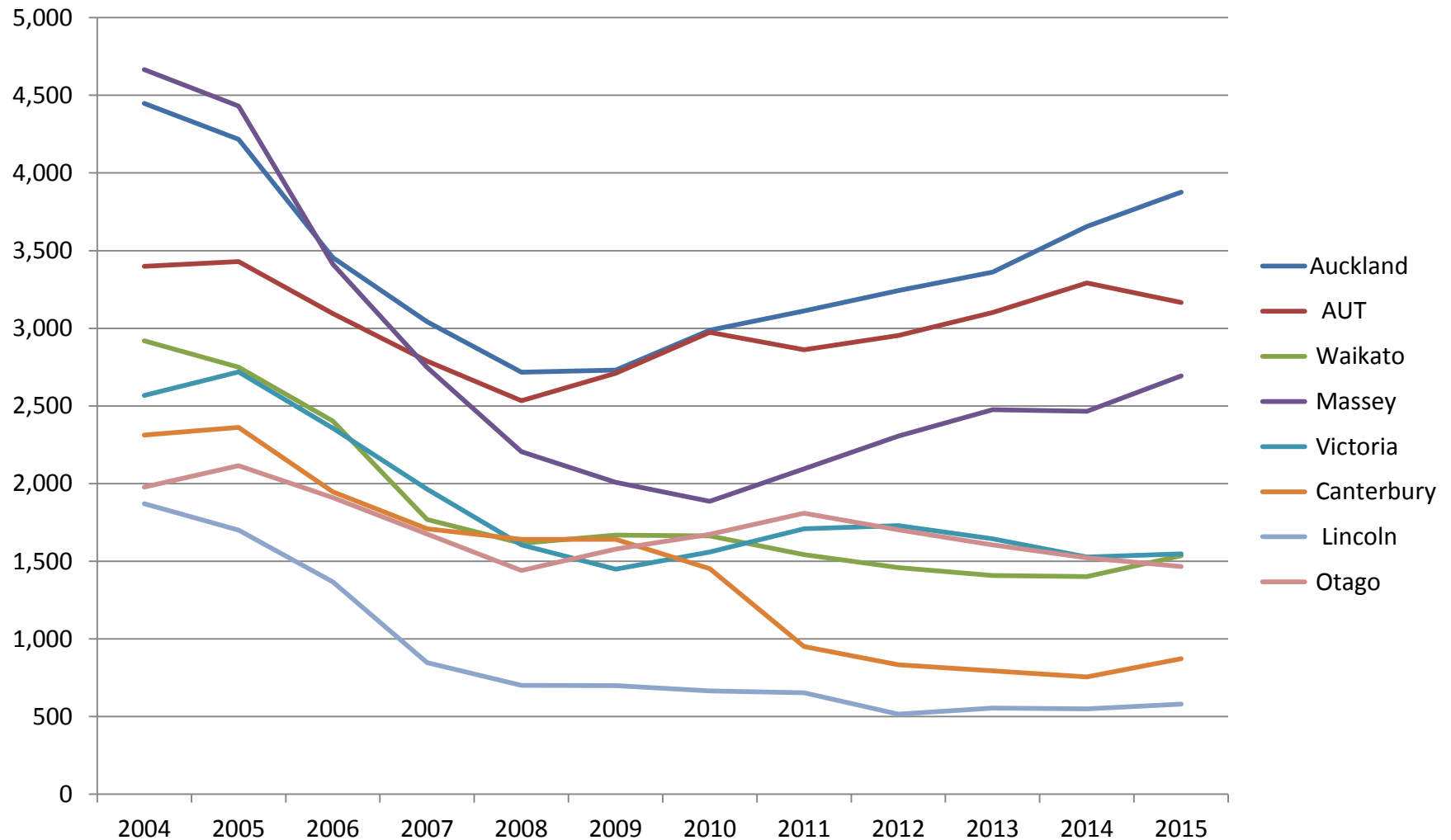
Source: Tertiary Education Commission, 1997-2014 TEI sector performance data; 2015 data from TEI financial information by year.

# Domestic Student EFTS



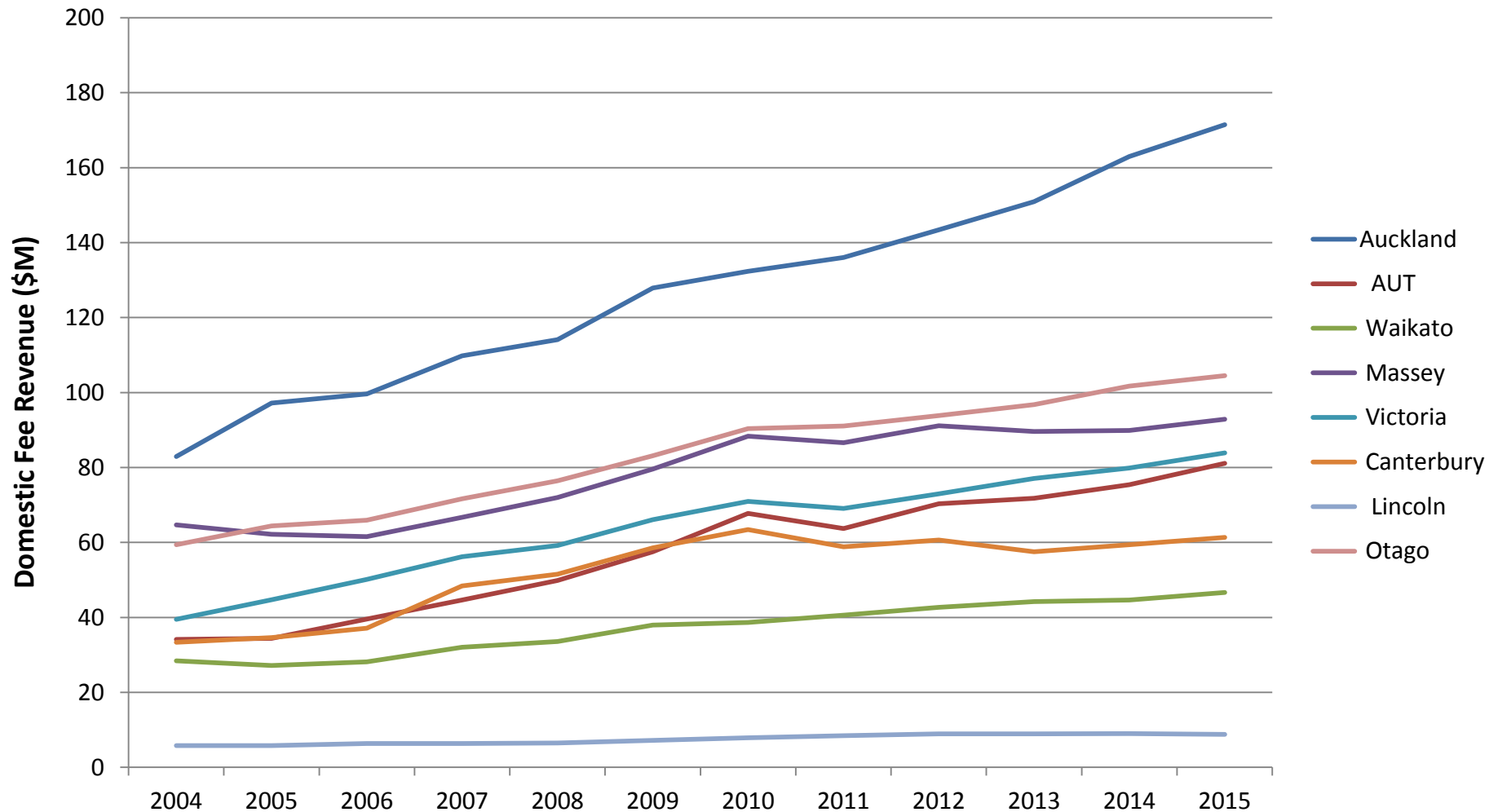
Source: Tertiary Education Commission, 1997-2014 TEI sector performance data; 2015 data from TEI financial information by year.

# International Student EFTS



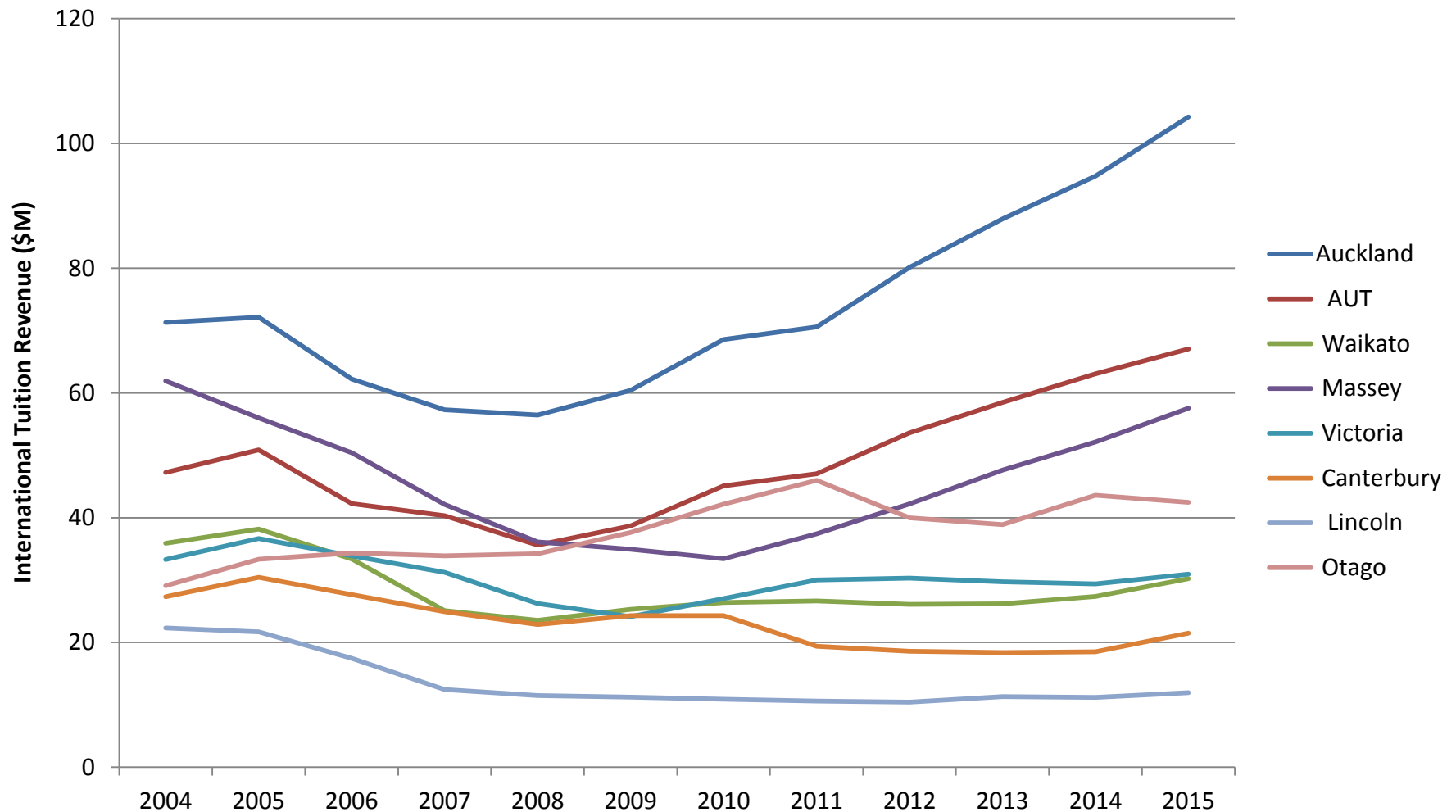
Source: Tertiary Education Commission, 1997-2014 TEI sector performance data; 2015 data from TEI financial information by year.

# Domestic Student Fee Revenue



Source: Tertiary Education Commission, 1997-2014 TEI sector performance data; 2015 data from TEI financial information by year.

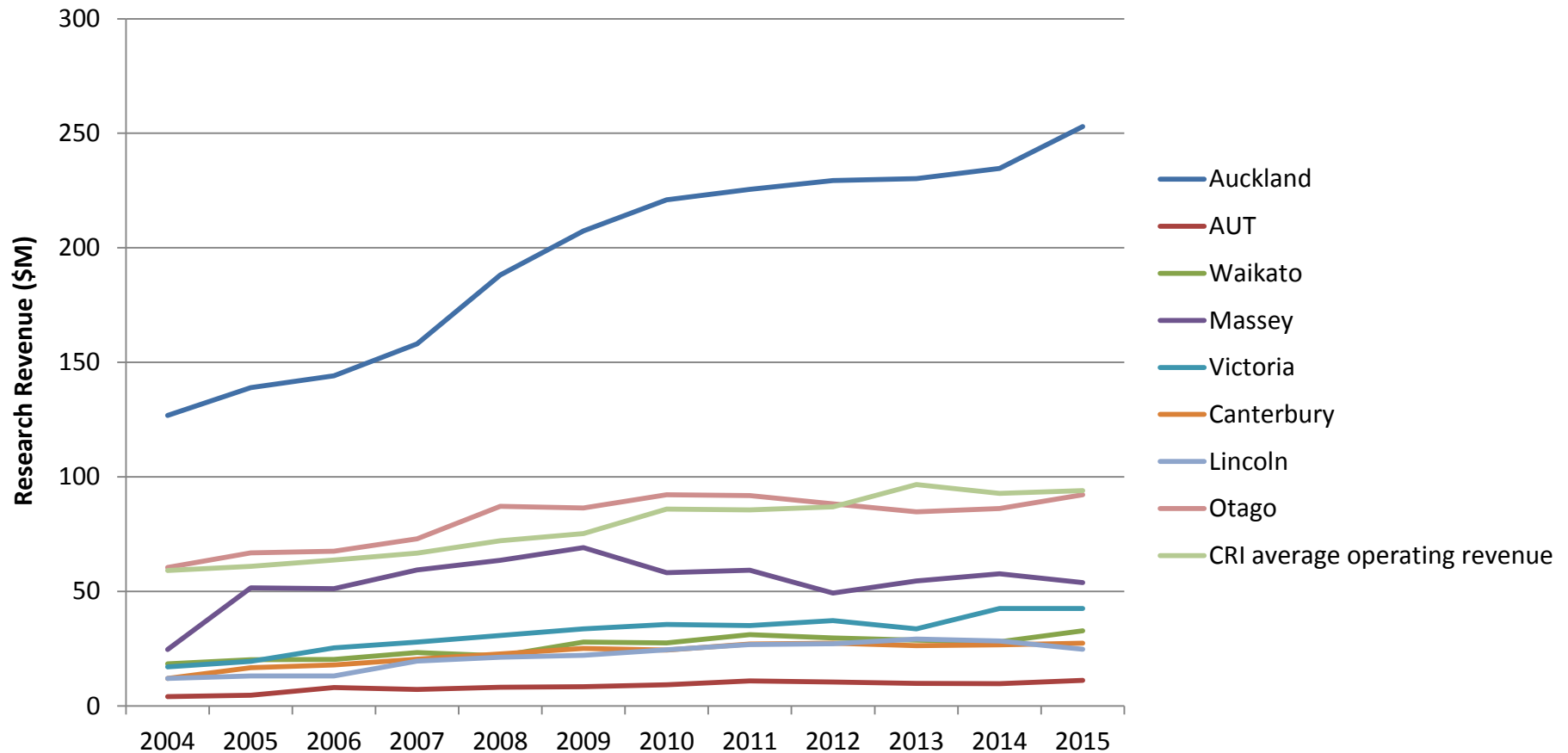
# International Student Fee Revenue



Source: Tertiary Education Commission, 1997-2014 TEI sector performance data; 2015 data from TEI financial information by year.



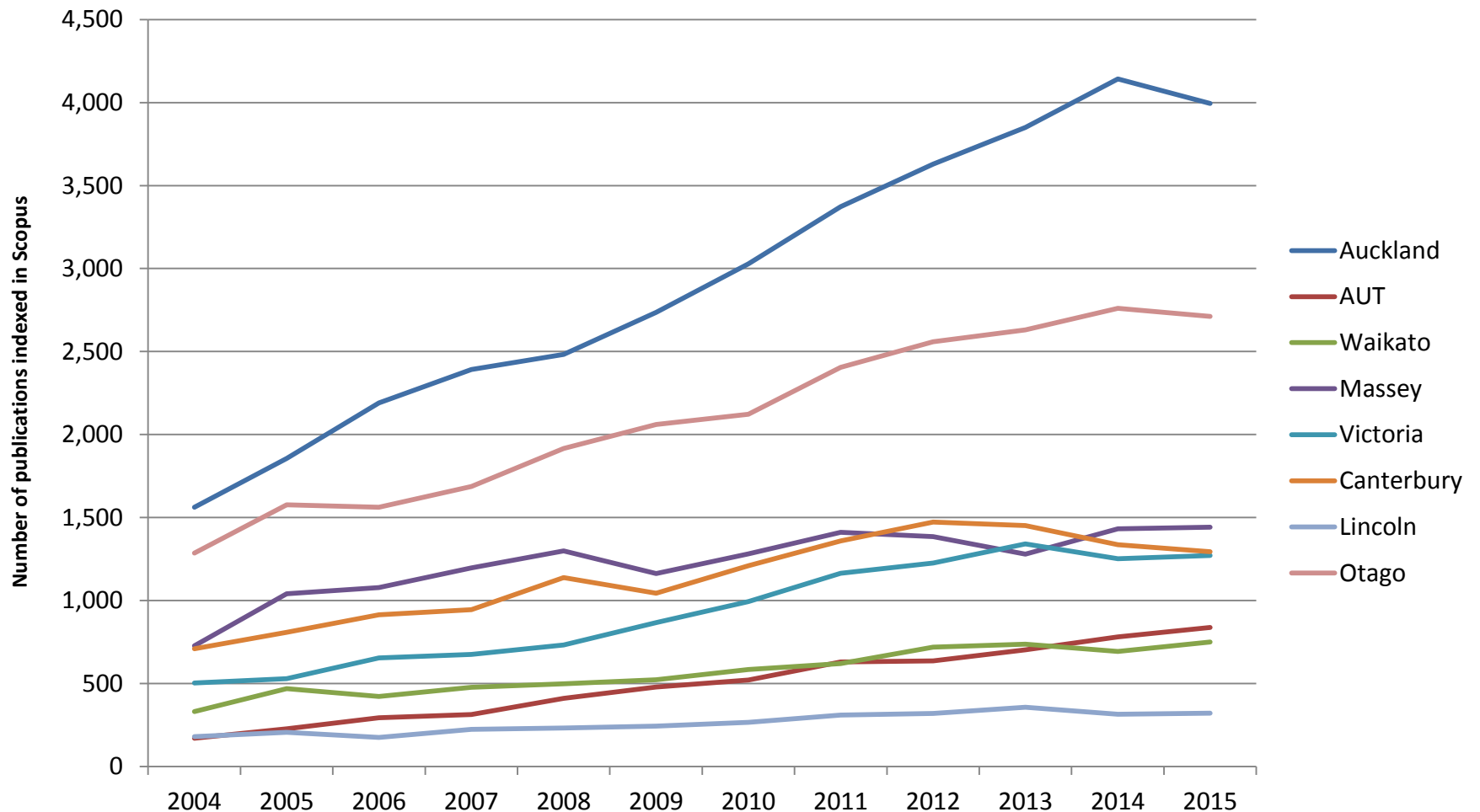
# Research and Contract Revenue



Note: Research and contract revenue includes all externally funded research and contract income (i.e. excludes PBRF income). For the CRIs average operating revenue has been calculated from operating revenue figures obtained from Statistics New Zealand. In the absence of research income figures this figure is used to approximate their research income based on the assumption that the bulk of their income is research income.

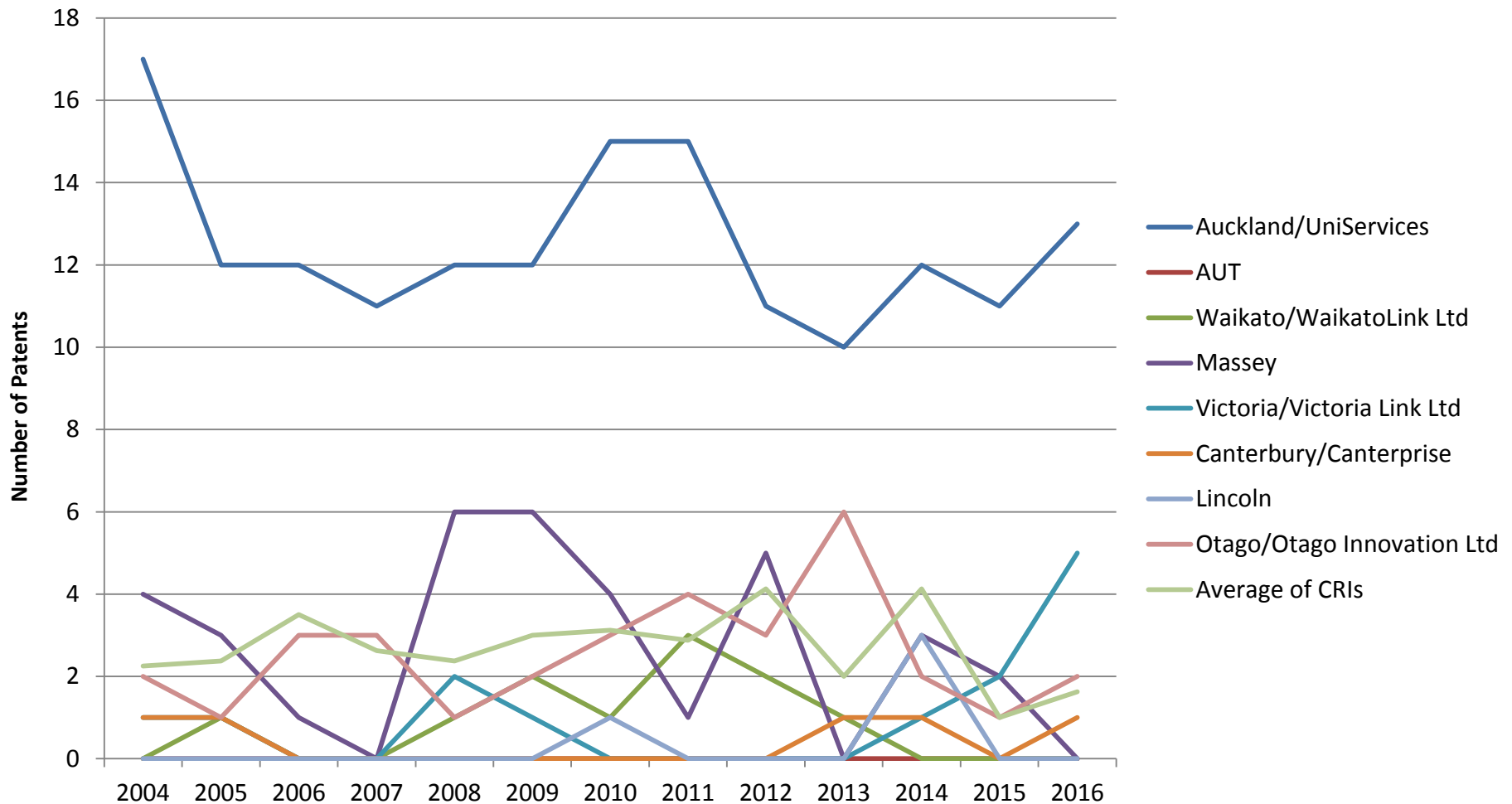
Source: University data from Tertiary Education Commission, 1997-2014 TEI sector performance data; 2015 data from TEI financial information by year. CRI data from Statistics New Zealand.

# Research Publications



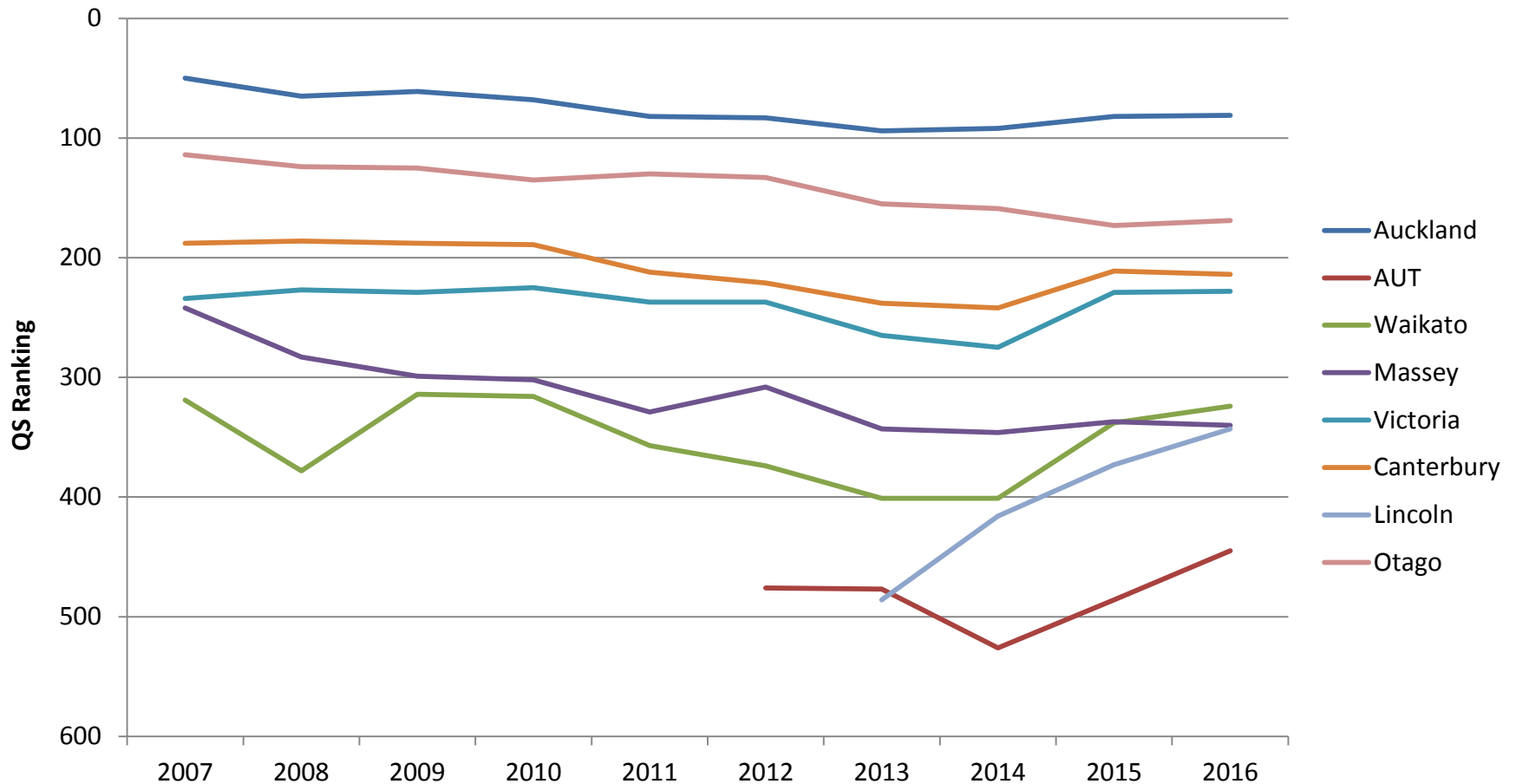
Source: Scopus database; data extracted: 20 October 2016.

# Patenting Activity



Source: Thompson Innovation patent database.

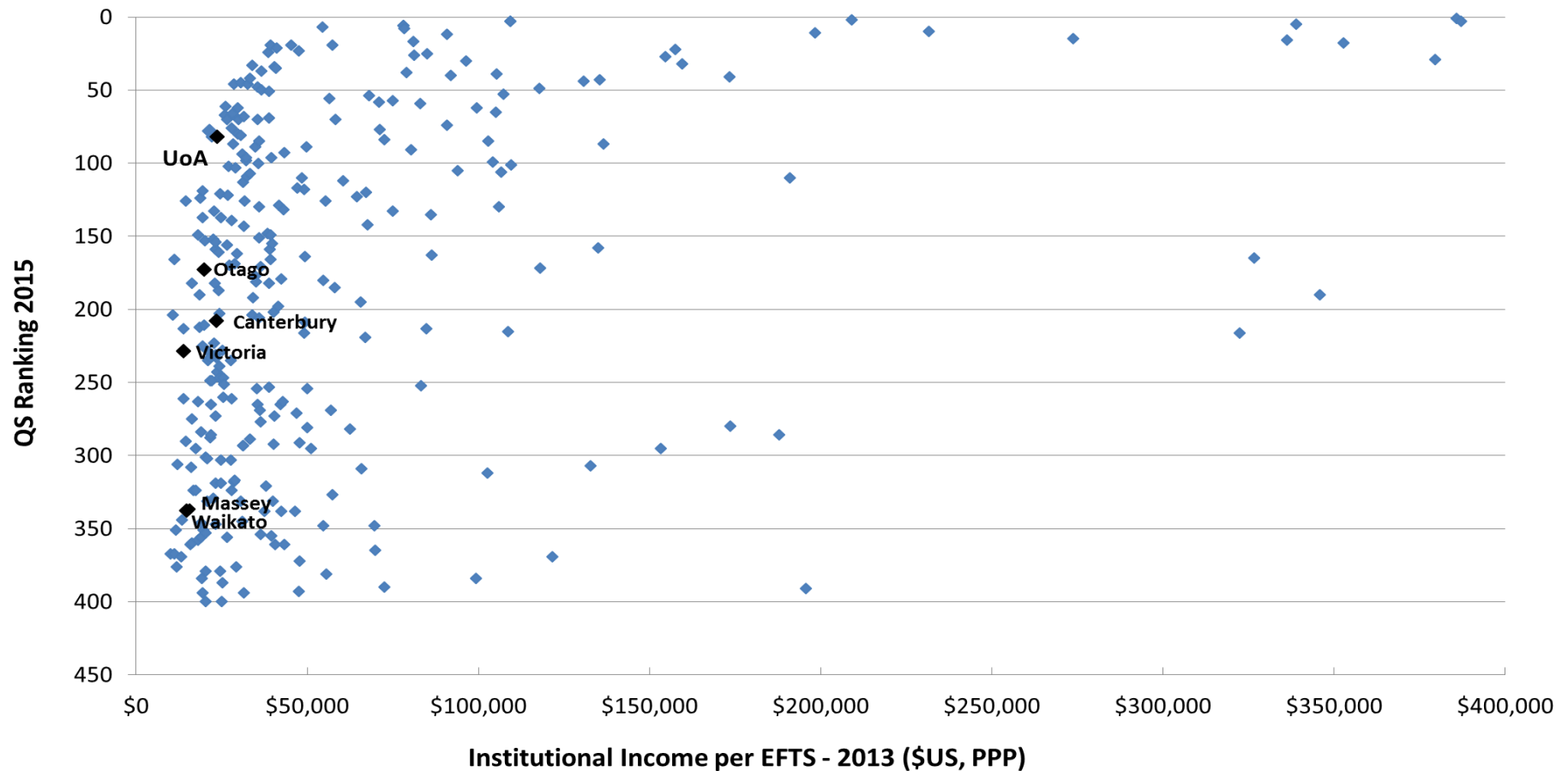
# QS Rankings



Source: QS Quacquarelli Symonds ([www.topuniversities.com](http://www.topuniversities.com))

Note: A significant change in the QS methodology in 2015 accounts for the apparent improvement in the rankings.

## QS ranking versus institutional income per student



Note: Massey and Waikato are ranked 337 and 338 respectively, which explains the overlapping data points.

Source: QS ranking data from QS Quacquarelli Symonds ([www.topuniversities.com](http://www.topuniversities.com)). Income per student data from Clarivate Analytics (Formerly Thompson Reuters), Institutional Profiles (Insites) data.